

FICHE D'HOMOLOGATION HOMOLOGATION FORM

34/P/16



COMMISSION INTERNATIONALE DE KARTING - FIA



PNEUMATIQUE / TYRE

| | | |
|-------------------------|-------------------------------------|--------------------------|
| Manufacturier | <i>Tyre Manufacturer</i> | Reifenwerk Heidenau GmbH |
| Marque | <i>Make</i> | MOJO |
| Modèle | <i>Model</i> | SLICK – D2 4.5/10.0-5 |
| Catégorie | <i>Category</i> | Groupe-2/Group-2 |
| Durée de l'homologation | <i>Validity of the homologation</i> | 3 ans / 3 years |
| Nombre de pages | <i>Number of pages</i> | 4 |
| Nombre de pages annexes | <i>Number of appended pages</i> | |

La présente Fiche d'Homologation reproduit descriptions, illustrations et dimensions du pneumatique au moment de l'homologation CIK-FIA. Le Manufacturier a la possibilité de les modifier seulement dans les limites fixées par le règlement CIK-FIA en vigueur.

This Homologation Form reproduces descriptions, illustrations and dimensions of the tyre at the time of the CIK-FIA homologation. The Tyre Manufacturer may modify them, but only within the limits laid down by the CIK-FIA regulations in force.

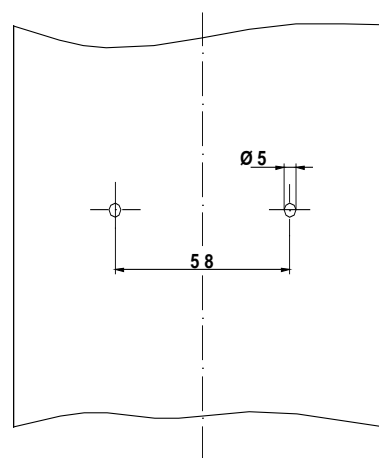


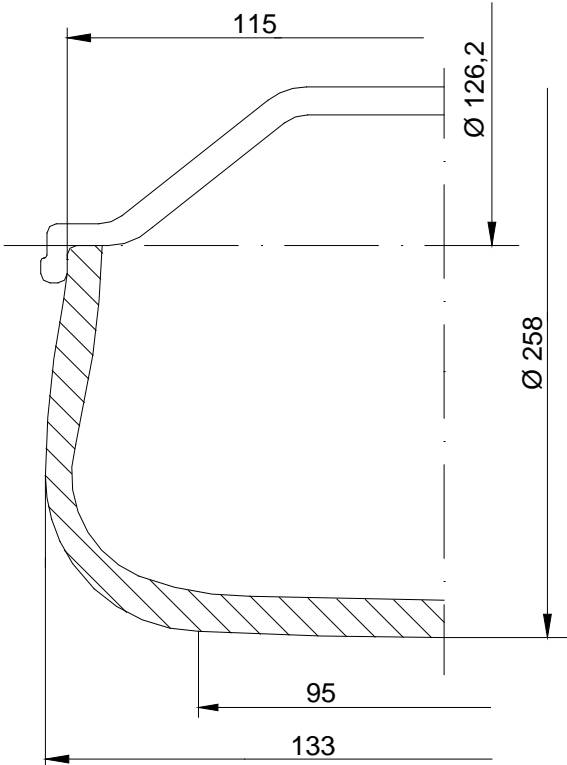
PHOTO DU PNEU MONTÉ SUR LA JANTE
PHOTO OF THE TYRE FITTED TO THE RIM

DESSIN DE LA BANDE DE ROULEMENT
TREAD DESIGN DRAWING

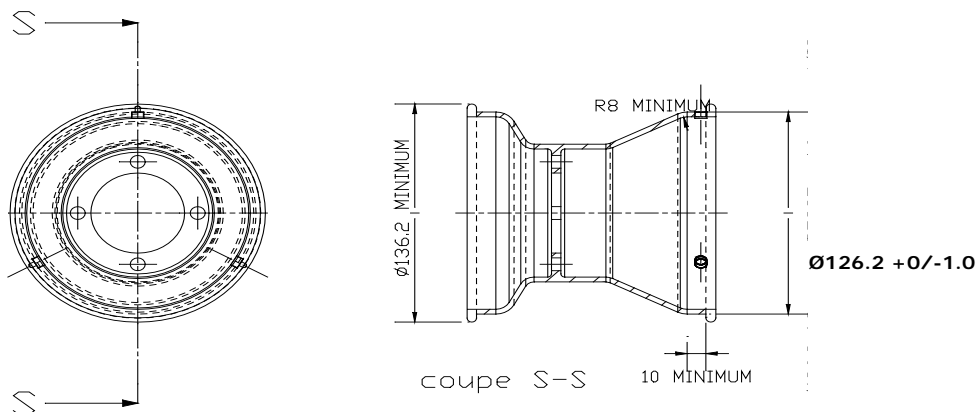
Signature et tampon de l'ASN
Signature and stamp of the ASN

Signature et tampon de la CIK-FIA
Signature and stamp of the CIK-FIA

| DESCRIPTIONS TECHNIQUES | | | TECHNICAL DESCRIPTIONS | | | |
|--|---|--|---|---------|--------------------------|-------------|
| Sous une température de 23°C +/- 2°C, avec une humidité de 50% +/-5% | | | At a temperature of 23°C +/- 2°C and with a humidity of 50% +/-5% | | | |
| Pt | Descriptions | Descriptions | Valeurs | | Tolérances | |
| 1 | Dimensions | <i>Dimensions</i> | 4.5/10.0-5 | | - | |
| 2 | Désignation du mélange | <i>Tread compound designation</i> | D2 | | - | |
| 3 | Pression de service | <i>Service pressure</i> | 0,65 bar | | +0,35/- 0,05 bar | |
| 4 | Pression de gonflage maximum | <i>Maximum inflation pressure</i> | 4 bar | | Max | |
| 5 | Capacité de charge maximum | <i>Maximum load capacity</i> | 80 kg | | Max | |
| 6 | Vitesse maximale | <i>Maximum speed</i> | 180 km/h | | Max | |
| 7 | Rigidité latérale et verticale (sous charge de 40 kg) | <i>Lateral and vertical stiffness (under 40 kg load)</i> | L 1,0 mm V 7,0 mm | | +/- 1 +/- 2 | |
| 8 | Rigidité latérale et verticale pour SK et ICE (sous charge de 50 kg) | <i>Lateral and vertical stiffness for SK & ICE (under 50 kg load)</i> | — | | +/- 1 +/- 2 | |
| 9 | Profondeur du profil | <i>Depth of tread</i> | 3,5 mm | | +/- 0,5 mm | |
| 10 | Poids en grammes | <i>Weight in grams</i> | 1083 | | +/- 10 % | |
| 11 | Nombre de plis | <i>Numbers of plies</i> | 2 | | - | |
| 12 | Épaisseur de la bande de roulement | <i>Tread thickness</i> | 4,5 mm | | +/- 1,0 mm | |
| 13 | Nombre d'indicateurs d'usure du pneu | <i>Number of tread wear indicators</i> | 8 | | - | |
| 14 | Matériel de la carcasse | <i>Carcass material</i> | Polyester | | - | |
| 15 | Angle de tissage de la toile du pneu | <i>Angle of tyre canvass</i> | 30 | | +/- 3° | |
| 16 | Type du fil de tissage (Selon ISO) | <i>Canvass thread type (According to ISO)</i> | 1100 | | - | |
| 17 | Pneu tubeless | <i>Tubeless tyre</i> | YES | | - | |
| 18 | Dureté superficielle de la bande de roulement (ISO 48/94 – 2 échantillons de 2mm d'épaisseur) | <i>Superficial tread hardness (ISO 48/94 – 2 samples of 2mm thickness)</i> | 49,6 | | +/- 5 DIDC - IRHD | |
| 19 | Contrainte-déformation en traction (ISO 37:2005 – éprouvette type 3) | <i>Tensile stress-strain (ISO 37:2005 – type 3 sample)</i> | At 100% | At 300% | At 100% | At 300% |
| | | | 1,4 | 6,8 | +/- 0.5 MPa | +/- 0.8 MPa |
| 20 | Classification (selon ISO 37:2005 – 300%) | <i>Classification (according to ISO 37:2005 – 300%)</i> | PRIME (medium) | | OPTION (hard) | |

| B | DESSIN EN SECTION TRANSVERSALE ET MESURES DU PNEU MONTÉ SUR UNE JANTE | B | DRAWING OF CROSS SECTION AND DIMENSIONS OF TYRE FITTED TO A RIM | | | | | | | | | | | | | | | | | | | | | | | | | | | | | | | | |
|--|---|---|---|--------------------------|--|----|----|-------------|---------|-----------|-------|-----|-------|----|-------|-----|-------|--|--|--|--|--|--|--|--|--|--|--|--|--|--|-----------------------|--|--|--|
|  | | | <table border="1"> <thead> <tr> <th colspan="2" data-bbox="1098 367 1517 450">Tolérances Tolerances</th> </tr> <tr> <th data-bbox="1098 450 1281 510">mm</th> <th data-bbox="1281 450 1517 510">mm</th> </tr> </thead> <tbody> <tr> <td data-bbox="1098 510 1281 562">Diam. 126,2</td> <td data-bbox="1281 510 1517 562">+/- 0,3</td> </tr> <tr> <td data-bbox="1098 562 1281 613">Diam. 258</td> <td data-bbox="1281 562 1517 613">+/- 5</td> </tr> <tr> <td data-bbox="1098 613 1281 665">115</td> <td data-bbox="1281 613 1517 665">+/- 1</td> </tr> <tr> <td data-bbox="1098 665 1281 716">95</td> <td data-bbox="1281 665 1517 716">+/- 5</td> </tr> <tr> <td data-bbox="1098 716 1281 768">133</td> <td data-bbox="1281 716 1517 768">+/- 3</td> </tr> <tr> <td data-bbox="1098 768 1281 819"></td> <td data-bbox="1281 768 1517 819"></td> </tr> <tr> <td data-bbox="1098 819 1281 871"></td> <td data-bbox="1281 819 1517 871"></td> </tr> <tr> <td data-bbox="1098 871 1281 922"></td> <td data-bbox="1281 871 1517 922"></td> </tr> <tr> <td data-bbox="1098 922 1281 974"></td> <td data-bbox="1281 922 1517 974"></td> </tr> <tr> <td data-bbox="1098 974 1281 1025"></td> <td data-bbox="1281 974 1517 1025"></td> </tr> <tr> <td data-bbox="1098 1025 1281 1077"></td> <td data-bbox="1281 1025 1517 1077"></td> </tr> <tr> <td data-bbox="1098 1077 1281 1128"></td> <td data-bbox="1281 1077 1517 1128"></td> </tr> <tr> <td colspan="2" data-bbox="1098 1128 1517 1294">Remarques Comments</td> </tr> <tr> <td colspan="2" data-bbox="1098 1294 1517 1431"></td> </tr> </tbody> </table> | Tolérances Tolerances | | mm | mm | Diam. 126,2 | +/- 0,3 | Diam. 258 | +/- 5 | 115 | +/- 1 | 95 | +/- 5 | 133 | +/- 3 | | | | | | | | | | | | | | | Remarques Comments | | | |
| Tolérances Tolerances | | | | | | | | | | | | | | | | | | | | | | | | | | | | | | | | | | | |
| mm | mm | | | | | | | | | | | | | | | | | | | | | | | | | | | | | | | | | | |
| Diam. 126,2 | +/- 0,3 | | | | | | | | | | | | | | | | | | | | | | | | | | | | | | | | | | |
| Diam. 258 | +/- 5 | | | | | | | | | | | | | | | | | | | | | | | | | | | | | | | | | | |
| 115 | +/- 1 | | | | | | | | | | | | | | | | | | | | | | | | | | | | | | | | | | |
| 95 | +/- 5 | | | | | | | | | | | | | | | | | | | | | | | | | | | | | | | | | | |
| 133 | +/- 3 | | | | | | | | | | | | | | | | | | | | | | | | | | | | | | | | | | |
| | | | | | | | | | | | | | | | | | | | | | | | | | | | | | | | | | | | |
| | | | | | | | | | | | | | | | | | | | | | | | | | | | | | | | | | | | |
| | | | | | | | | | | | | | | | | | | | | | | | | | | | | | | | | | | | |
| | | | | | | | | | | | | | | | | | | | | | | | | | | | | | | | | | | | |
| | | | | | | | | | | | | | | | | | | | | | | | | | | | | | | | | | | | |
| | | | | | | | | | | | | | | | | | | | | | | | | | | | | | | | | | | | |
| | | | | | | | | | | | | | | | | | | | | | | | | | | | | | | | | | | | |
| Remarques Comments | | | | | | | | | | | | | | | | | | | | | | | | | | | | | | | | | | | |
| | | | | | | | | | | | | | | | | | | | | | | | | | | | | | | | | | | | |

Jante 5" standardisée / Standardised 5" rim



| | | | | |
|---|-------------------------|---|-------------------|-----------------|
| C | PHOTOS ET INSCRIPTIONS | Seules les inscriptions qui ne changeront pas tout au long de la fabrication sont reportées ci-dessous. | | |
| C | PHOTOS AND INSCRIPTIONS | Only inscriptions which will not change during production are mentioned below. | | |
| Photo du flanc extérieur du pneu Photo of tyre external side wall | | Inscriptions sur le flanc extérieur du pneu Inscriptions on tyre external side wall | | |
|  | | Texte Text | Hauteur Height | Trait Stroke |
| | | MOJO (printed) | | |
| | | 4.5/10.0-5 | 7 | 2 |
| | | TUBELESS | 4 | 1 |
| | | MADE IN GERMANY | 3 | 1 |
| | | FOR RACE PURPOSE ONLY | 4,5 | 1 |
|  | | Texte Text | Hauteur Height | Trait Stroke |
| | | MOJO | 16 | 5 |
| | | 4.5/10.0-5 | 7 | 2 |
| | | TUBELESS | 4 | 1 |
| | | MADE IN GERMANY | 3 | 1 |
| | | FOR RACE PURPOSE ONLY | 4,5 | 1 |
|  | | MAX. INFLATE PRESSURE 4.0 BAR / 58 PSI | 4 | 1 |
| | | D2 | 6 | 1,5 |
| | | CIK | 6 | 2 |
| | | F | 6 | 0,8 |
| | | Prime | 4 | 0,7 |
| | |  | 8 | 0,5 / 1,5 |

FICHE D'HOMOLOGATION HOMOLOGATION FORM

33/P/16



COMMISSION INTERNATIONALE DE KARTING - FIA



PNEUMATIQUE / TYRE

| | | |
|-------------------------|-------------------------------------|--------------------------|
| Manufacturier | <i>Tyre Manufacturer</i> | Reifenwerk Heidenau GmbH |
| Marque | <i>Make</i> | MOJO |
| Modèle | <i>Model</i> | SLICK - D2 7.1/11.0-5 |
| Catégorie | <i>Category</i> | Groupe-2/Group-2 |
| Durée de l'homologation | <i>Validity of the homologation</i> | 3 ans / 3 years |
| Nombre de pages | <i>Number of pages</i> | 4 |
| Nombre de pages annexes | <i>Number of appended pages</i> | |

La présente Fiche d'Homologation reproduit descriptions, illustrations et dimensions du pneumatique au moment de l'homologation CIK-FIA. Le Manufacturier a la possibilité de les modifier seulement dans les limites fixées par le règlement CIK-FIA en vigueur.

This Homologation Form reproduces descriptions, illustrations and dimensions of the tyre at the time of the CIK-FIA homologation. The Tyre Manufacturer may modify them, but only within the limits laid down by the CIK-FIA regulations in force.

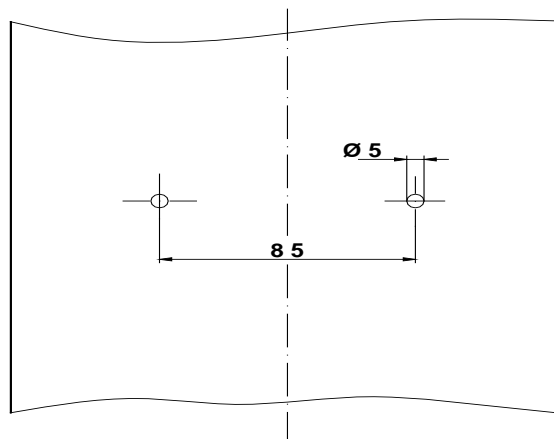


PHOTO DU PNEU MONTÉ SUR LA JANTE
PHOTO OF THE TYRE FITTED TO THE RIM

DESSIN DE LA BANDE DE ROULEMENT
TREAD DESIGN DRAWING

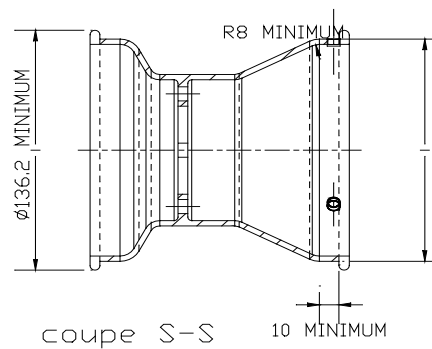
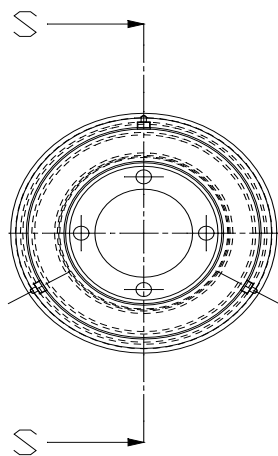
Signature et tampon de l'ASN
Signature and stamp of the ASN

Signature et tampon de la CIK-FIA
Signature and stamp of the CIK-FIA

| DESCRIPTIONS TECHNIQUES | | | TECHNICAL DESCRIPTIONS | | | |
|--|---|--|---|---------|--------------------------|-------------|
| Sous une température de 23°C +/- 2°C, avec une humidité de 50% +/-5% | | | At a temperature of 23°C +/- 2°C and with a humidity of 50% +/-5% | | | |
| Pt | Descriptions | Descriptions | Valeurs | | Tolérances | |
| 1 | Dimensions | <i>Dimensions</i> | 7.1/11.0-5 | | - | |
| 2 | Désignation du mélange | <i>Tread compound designation</i> | D2 | | - | |
| 3 | Pression de service | <i>Service pressure</i> | 0,65 bar | | +0,35/-0,05 bar | |
| 4 | Pression de gonflage maximum | <i>Maximum inflation pressure</i> | 4 bar | | Max | |
| 5 | Capacité de charge maximum | <i>Maximum load capacity</i> | 100 kg | | Max | |
| 6 | Vitesse maximale | <i>Maximum speed</i> | 180 km/h | | Max | |
| 7 | Rigidité latérale et verticale (sous charge de 40 kg) | <i>Lateral and vertical stiffness (under 40 kg load)</i> | L | 1,0 mm | +/- 1 +/- 2 | |
| | | | V | 8,0 mm | | |
| 8 | Rigidité latérale et verticale pour SK et ICE (sous charge de 50 kg) | <i>Lateral and vertical stiffness for SK & ICE (under 50 kg load)</i> | --- | | +/- 1 +/- 2 | |
| 9 | Profondeur du profil | <i>Depth of tread</i> | 3,5 mm | | +/- 0,5 mm | |
| 10 | Poids en grammes | <i>Weight in grams</i> | 1432 g | | +/- 10 % | |
| 11 | Nombre de plis | <i>Numbers of plies</i> | 2 | | - | |
| 12 | Épaisseur de la bande de roulement | <i>Tread thickness</i> | 4,5 mm | | +/- 1,0 mm | |
| 13 | Nombre d'indicateurs d'usure du pneu | <i>Number of tread wear indicators</i> | 8 | | - | |
| 14 | Matériel de la carcasse | <i>Carcass material</i> | Polyester | | - | |
| 15 | Angle de tissage de la toile du pneu | <i>Angle of tyre canvass</i> | 30 | | +/- 3° | |
| 16 | Type du fil de tissage (Selon ISO) | <i>Canvass thread type (According to ISO)</i> | 1100 | | - | |
| 17 | Pneu tubeless | <i>Tubeless tyre</i> | YES | | - | |
| | | | | | | |
| 18 | Dureté superficielle de la bande de roulement (ISO 48/94 – 2 échantillons de 2mm d'épaisseur) | <i>Superficial tread hardness (ISO 48/94 – 2 samples of 2mm thickness)</i> | 46,5 | | +/- 5 DIDC - IRHD | |
| 19 | Contrainte-déformation en traction (ISO 37:2005 – éprouvette type 3) | <i>Tensile stress-strain (ISO 37:2005 – type 3 sample)</i> | At 100% | At 300% | At 100% | At 300% |
| | | | 1,5 | 6,9 | +/- 0.5 MPa | +/- 0.8 MPa |
| | | | | | | |
| | | | | | | |
| 20 | Classification (selon ISO 37:2005 – 300%) | <i>Classification (according to ISO 37:2005 – 300%)</i> | PRIME (medium) | | OPTION (hard) | |

| B | DESSIN EN SECTION TRANSVERSALE ET MESURES DU PNEU MONTÉ SUR UNE JANTE | B | DRAWING OF CROSS SECTION AND DIMENSIONS OF TYRE FITTED TO A RIM |
|---|---|--------------------------|---|
| | | Tolérances Tolerances | |
| | | mm | mm |
| | | Diam. 126,2 | +/- 0,3 |
| | | Diam. 274 | +/- 5 |
| | | 198 | +/- 1 |
| | | 140 | +/- 5 |
| | | 209 | +/- 3 |
| | | | |
| | | Remarques Comments | |
| | | | |

Jante 5" standardisée / Standardised 5" rim



$\text{Ø}126.2 +0/-1.0$

| | | | | |
|---|-------------------------|---|-------------------------|-----------------------|
| C | PHOTOS ET INSCRIPTIONS | Seules les inscriptions qui ne changeront pas tout au long de la fabrication sont reportées ci-dessous. | | |
| C | PHOTOS AND INSCRIPTIONS | Only inscriptions which will not change during production are mentioned below. | | |
| Photo du flanc extérieur du pneu Photo of tyre external side wall | | Inscriptions sur le flanc extérieur du pneu Inscriptions on tyre external side wall | | |
|  | | Texte Text | Hauteur Height mm | Trait Stroke mm |
| | | MOJO (printed) | | |
| | | 7.1/11.0 – 5 | 7 | 2 |
| | | TUBELESS | 4 | 1 |
| | | MADE IN GERMANY | 3 | 1 |
| | | FOR RACE PURPOSE ONLY | 4,5 | 1 |
| | | MAX. INFLATION PRESSURE 4.0 BAR / 58 PSI | 4 | 1 |
|  | | 8 | 0,5 / 1,5 | |
| Photo du flanc intérieur du pneu Photo of tyre internal side wall | | Inscriptions sur le flanc intérieur du pneu Inscriptions on tyre internal side wall | | |
|  | | Texte Text | Hauteur Height mm | Trait Stroke mm |
| | | MOJO | 16 | 5 |
| | | 7.1/11.0 – 5 | 7 | 2 |
| | | TUBELESS | 4 | 1 |
| | | MADE IN GERMANY | 3 | 1 |
| | | FOR RACE PURPOSE ONLY | 4,5 | 1 |
| | | MAX. INFLATION PRESSURE 4.0 BAR / 58 PSI | 4 | 1 |
| | | D2 | 6 | 1,5 |
|  | | 8 | 0,5 / 1,5 | |
| CIK | 6 | 2 | | |
| F | 6 | 0,8 | | |
| Prime | 4 | 0,7 | | |